

LEAF SPRINGS

Steel



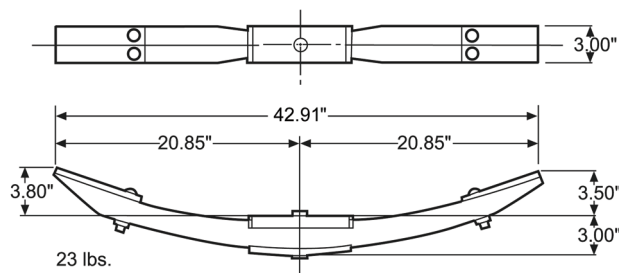
With OEM North American made steel mono, 2 leaf-air, 3 leaf and 8 leaf springs, we have the range to suit most trailer applications. Some popular models are listed overleaf. We also have different configurations of Heavy Truck spring packs for the brands we support, and many other all-make applications.

Composite

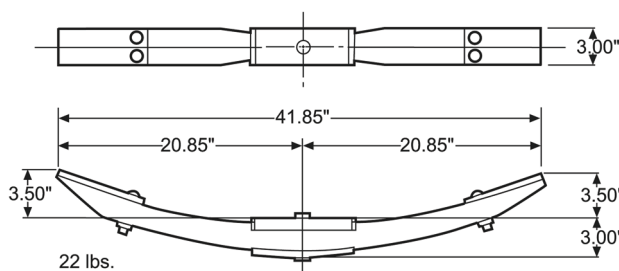


With weight savings of around 60% over conventional steel 3 leaf springs, Liteflex monoleaf composite springs can make a real difference to payload and fuel economy. The spring construction naturally withstands corrosion, is more durable than steel, and is not subject to the catastrophic failure seen in steel.

Part Number 21607-01 (Reyco)



Part Number 16316-01 (Hutchens)

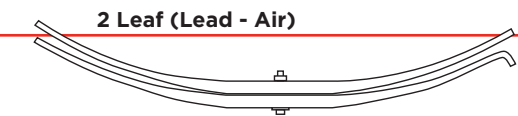


LEAF SPRING

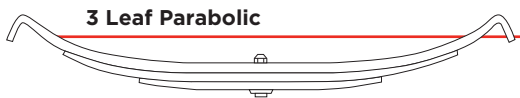
		SRI No.	Width	Length SE	Length LE	Arch	Thick
Mono Leaf Parabolic							
Hutch	363-00	TRA021	3"	21-3/4"	22-7/8"	4-3/4"	
Reyco	T5555	TRA031	3"	21-3/4"	22"	4"	1-13/16"
2 Leaf (Leaf - Air)							
Hutch	16710-01	TRA2757	3"	21-1/2"	22-3/4"	4-1/4"	
Reyco	1600-02	TRA3374	3"	21-7/8"	23-1/2"	4-1/2"	
3 Leaf Parabolic							
Fruehauf UCD	0511-1	TRA693	3"	21-1/2"	21-1/2"	4-1/8"	
Hutch	354-00	TRA2726	3"	22-1/2"	23-5/8"	6"	2-1/2"
	355-00	TRA2727	3"	21-3/4"	22-7/8"	4-1/2"	2-1/2"
	356-00	TRA2728	3"	21-1/4"	22-7/16"	3-5/8"	2-1/2"
	365-00	TRA2740	3"	22"	23-3/4"	5-1/2"	2-15/16"
Reyco	0079-01	TRA3340	3"	22-1/2"	24-1/8"	6"	2-1/2"
	0079-02	TRA3341	3"	21"	23-3/4"	3-5/8"	2-1/2"
	0329-00	TRA3330	3"	21-7/8"	21-7/8"	5-1/2"	2-1/2"
	0335-00	TRA3331	3"	21-1/2"	21-1/2"	2-5/8"	2-1/2"
	0693-00	TRA3349	3"	21-5/8"	23-3/8"	4-3/8"	2-1/2"
	08376-01	TRA2291	3"	21-1/2"	22"	4-1/8"	
Multi Leaf							
Reyco	T3564	TRA2270	3"	21-11/16"	21-11/16"	3-5/8"	
Composite							
Hutch	16316-01	TRA028	3"	21-1/2"	21-1/2"	3-3/8"	3"
Reyco	21607-01	TRA078	3"	21-3/4"	21-3/4"	3-3/4"	3"



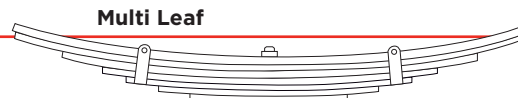
Mono Leaf Parabolic



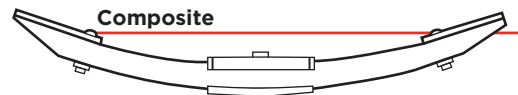
2 Leaf (Lead - Air)



3 Leaf Parabolic

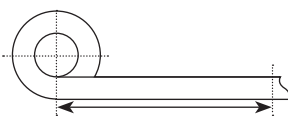


Multi Leaf

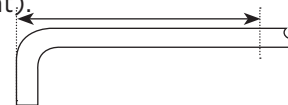


Composite

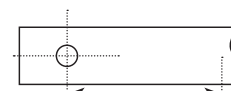
I.D. - Measure Springs on the main leaf from the spring centre.



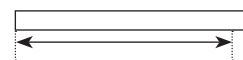
Springs with eye measure to centre of eye (flat).



Springs with hook measure to outside of hook (flat).



Springs with hole measure to centre of hole (flat).



Springs with plain ends measure to end (flat).