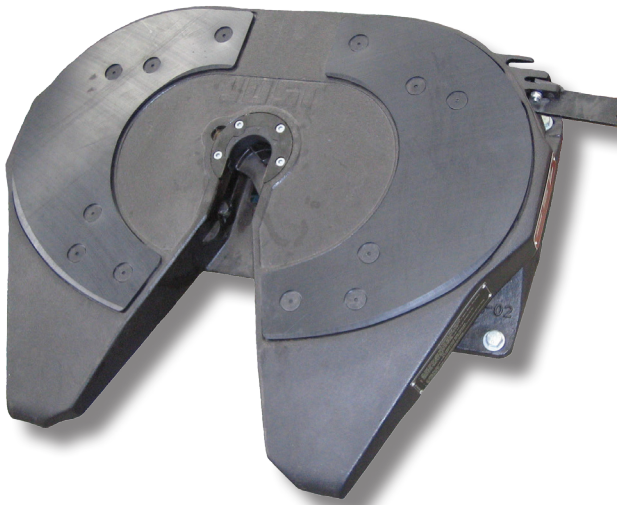


37C+ 37CW MODELS



- 50mm/2" Couplings
- Rubber mounting
- Cast Steel Top Plate

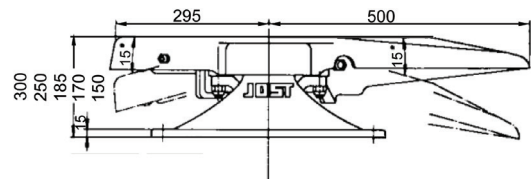
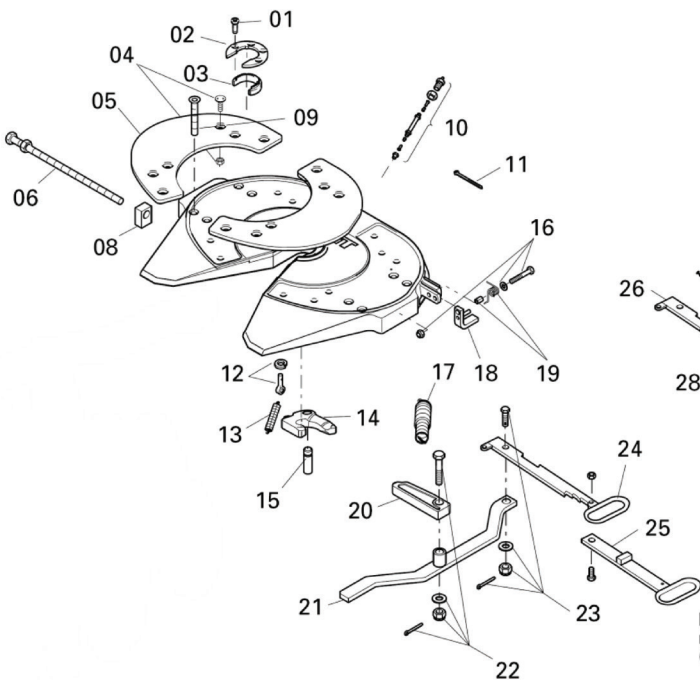
Applications:

- Tanker
- General freight
- Stock crate
- Fridge van
- B-double
- Road train

Also in 37 Series 37E range for light duty applications

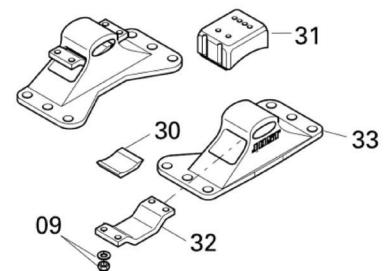
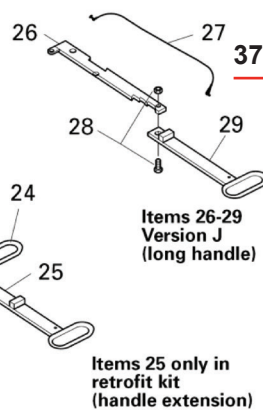
Weld-In Feet

37 Series Jost Fifth Wheels are available with either **weld-in** or **bolt-in** mounting feet.



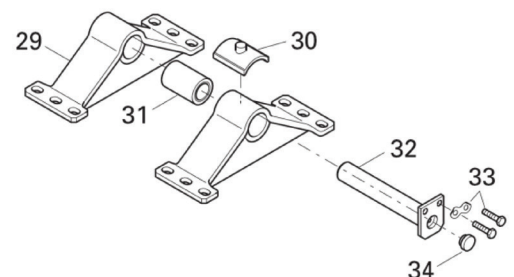
'W' MAINTENANCE FREE VERSION SHOWN

37C MOUNTING TRUNIONS & COMPONENTS



Item 2 Mounting Ring
3 Bolt = 37C
4 bolt = 37E

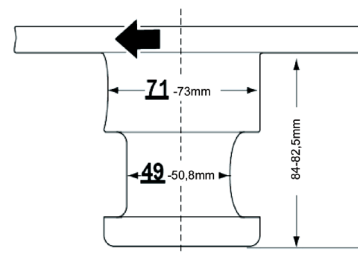
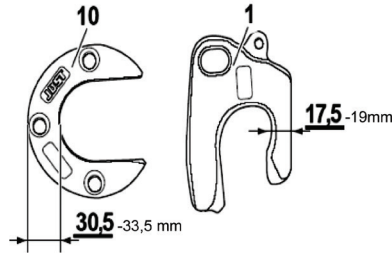
37E MOUNTING TRUNIONS & COMPONENTS



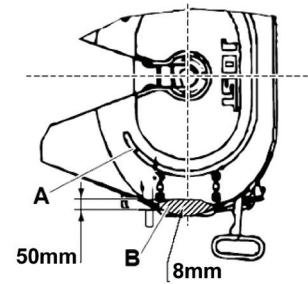
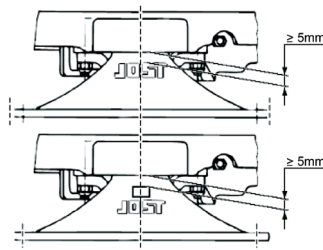
37 SERIES MAINTENANCE

Uncouple at short intervals (5,000km).
 Clean semi-trailer skid plate and fifth wheel plate. Lubricate fifth wheel plate, locking mechanism and king pin with high pressure grease (e.g. BP EP 2).
 The bearings of types C, D, and E are maintenance free.

WEAR LIMITS

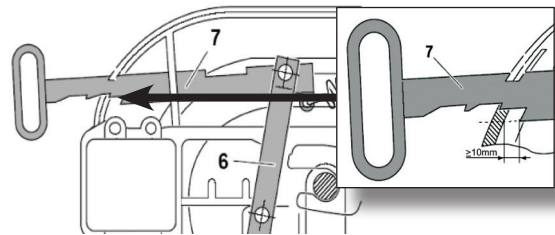
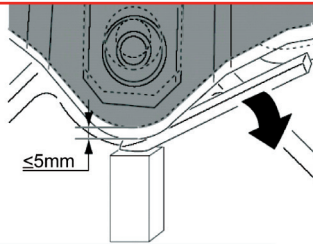


When the wear limit has been reached the affected components must be replaced.



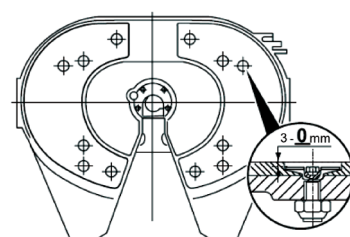
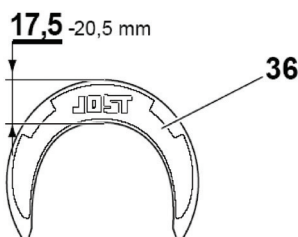
Version C must have a minimum gap of 5mm under load.

The fifth wheel coupling must be replaced. If the flat top surface is worn to the depth of the lubrication groove (A).



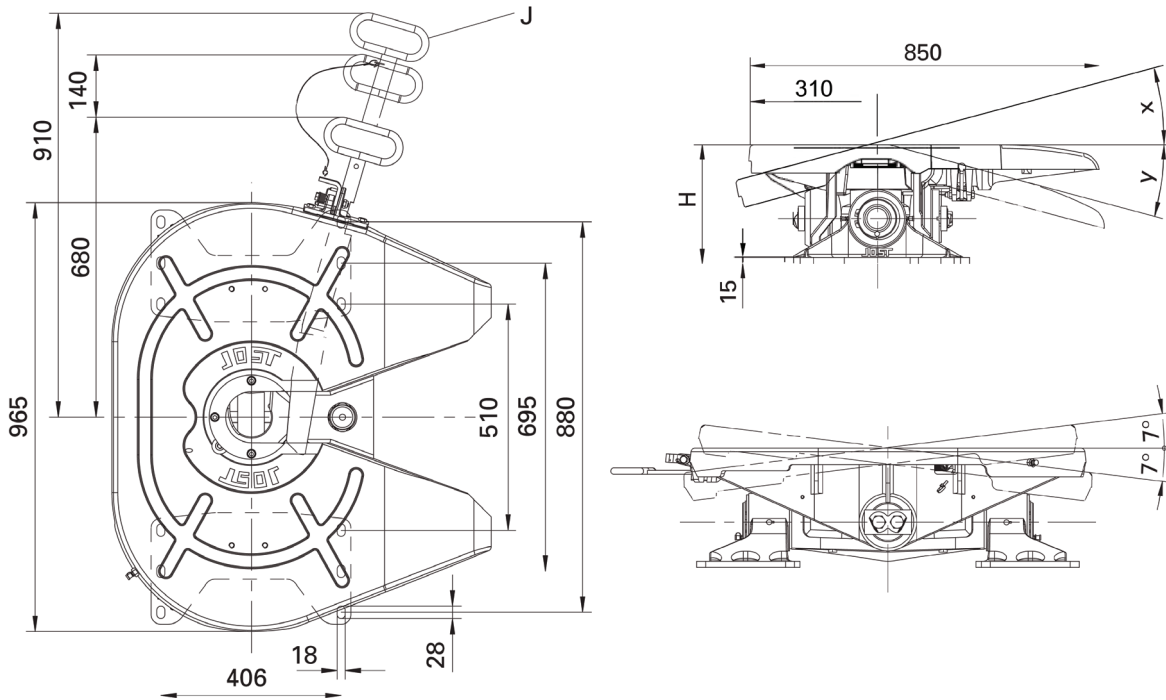
Version E may have maximum play of 5mm. To check this raise the skid plate with a crow bar.

When the fifth wheel coupling has been locked correctly, the distance between the safety edge and the inner edge of the plate must be at least 10mm.



For W models the wear limit of the liners is reached when they have worn down to the top of the securing bolts.

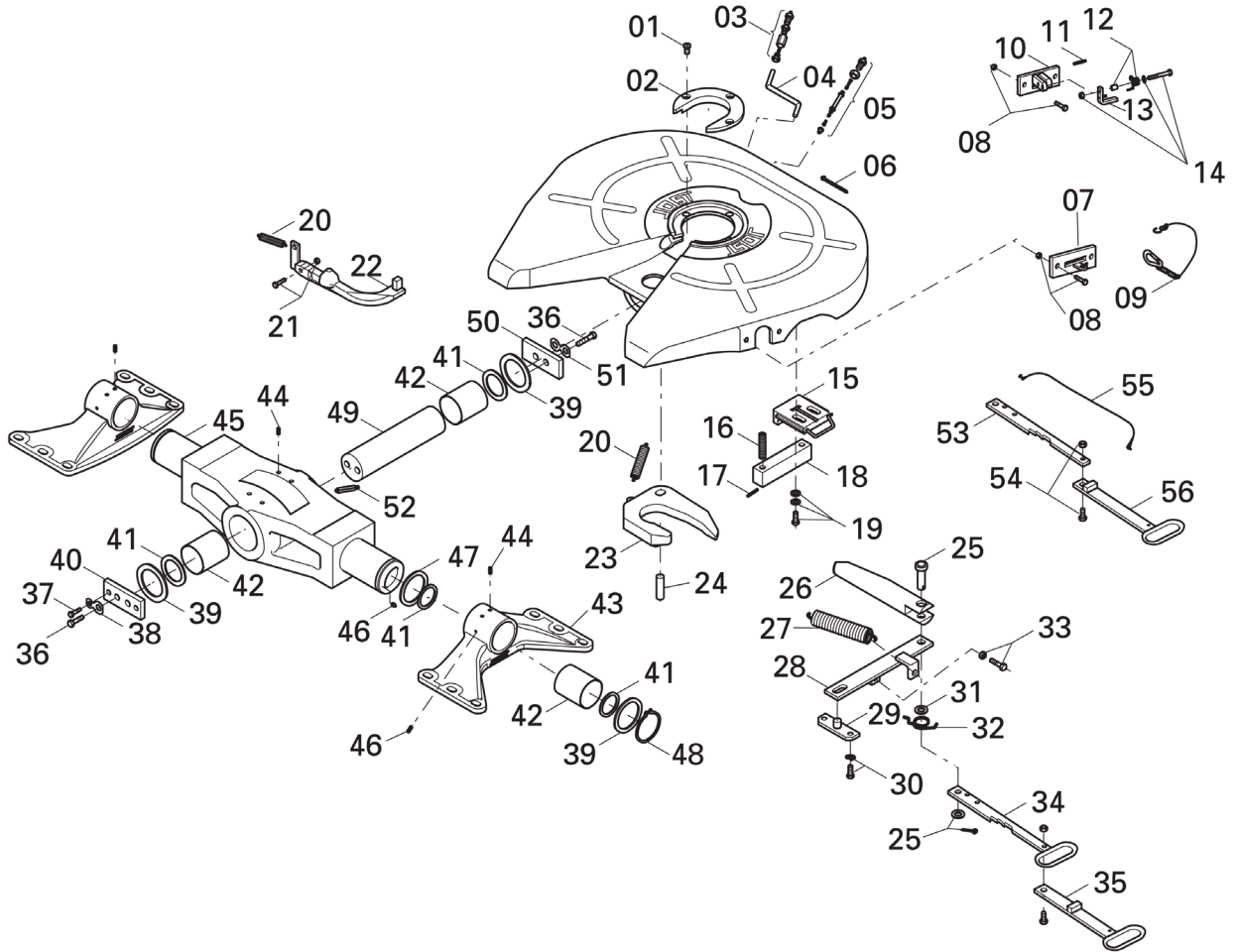
HEAVY DUTY FIFTH WHEEL COUPLING JSK 38G



Selection table / Versions available

Model	H (mm)	Lock	Pitching angle		D value (kN)	Imposed Load U (t)	Weight (kg)
			X	Y			
JSK 38G-1	290	3 ½"	15°	15°	260	36	265
	290	3 ½"	15°	15°	260	36	265
	290	3 ½"	15°	15°	260	36	265
	290	3 ½"	15°	15°	260	36	265
JSK 38G-1 2"	290	2"	15°	15°	170	28	265
	290	2"	15°	15°	170	28	265
	290	2"	15°	15°	170	28	265
	290	2"	15°	15°	170	28	265

JOST 38G PARTS



Part Number	Item	Description
SK2421-76	01, 02, (05), 09, 20, 23, 24, 27	Repair kit for lock 3 1/2"
SK2421-77	01, 02, (05), 09, 20, 23, 24, 27	Repair kit for lock 2"
SK2521-76	36, 37, 38, 41, 42, 44, 46, 51, 52,	Repair kit for bearing
SK2421-98	01, 02, 20, 23	Conversion kit from 3 1/2" to 2" lock
SK2421-99	01, 02, 20, 23	Conversion kit from 2" to 3 1/2" lock

