

GENUINE PARTS

With the biggest market share Eaton Fuller makes up a large part of our drivetrain business. Maintaining a range of new and factory remanufactured 13, 15, and 18 speed model Eaton Fuller transmissions, enables to get you back on the road faster.

We stock and recommend genuine Eaton Fuller parts, from Eaton's medium range 5206 and 6109 synchromesh models, to heavy duty 918 eighteen speed transmissions, talk to TRT first.



REBUILD BEARING KITS

Kit Number	Transmission
K-1851	RT/RTO6613
K-2043	RT/RTO14715
K-2283	RT/RTO11613
K-2286	RTLO14713A
K-2288	RTLO14/16718
K-2865	RTLO18718
K-3233	RT/RTO16915
K-3340	RTLO16/18/20918B
K-3355	RTLO14918B
K-3462	RTLO22918B
K-3941	FO-20E318

GEAR LEVER CONTROL VALVES



13 Speed
Red Knob
A7313



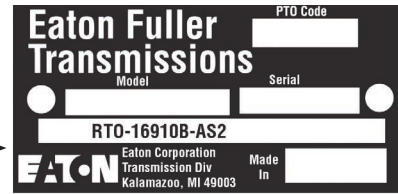
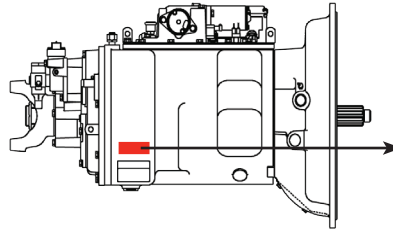
15 Speed
Blue Knob
A7315



18 Speed
Grey Knob
A7318

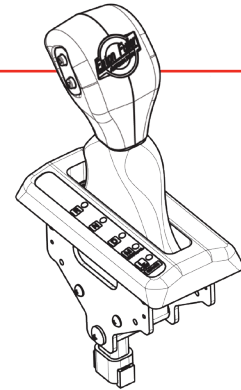
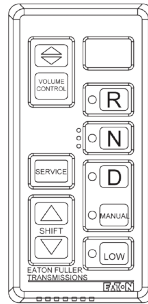
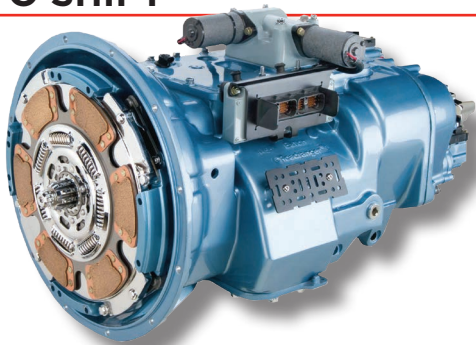
IDENTIFICATION

The I.D tag is located on the lower side of the main case. If the tag is missing use this chart to identify your gearbox.



1. Back Box Size	2. Valve	3. Output Shaft Spline	4. Back Box Design	Series	Speed	
	Top			6 (Super 10)	10	
	Side or Rear	Involute (Fine)	Cylinders Apart	9	13 or 18	
			Cylinders Together	9	15 or LL	
		Standard (Coarse)	Square Bolt Patterns	Extra Curves on Sides	6	15 or 18
			No Extra Curves on Sides	6	15 or LL	
		Square Bolt Not Patterns	Cylinders Apart	7	13 or 18	
			Cylinders Together	7	15 or LL	
					6	7
		Top			2 (FR)	10
		Slide or Rear	Involute (Fine)		9	10
Standard (Coarse)				6 or 7	9 or 10	

AUTO SHIFT



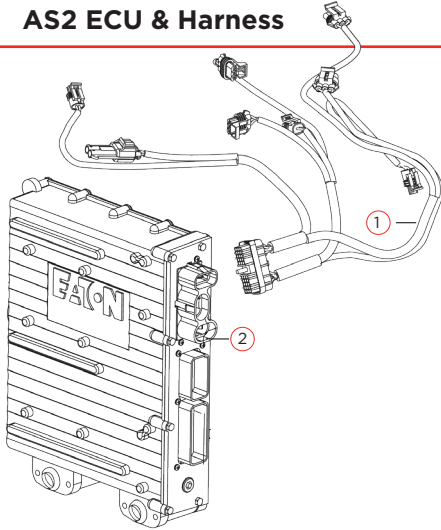
Push Button Assy

S2989RX Reman AS2
4306043 New AS3

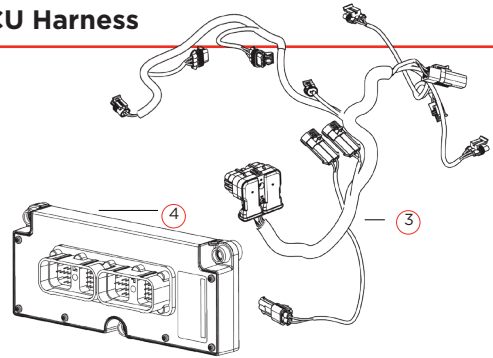
Cobra Shift Lever

K3997

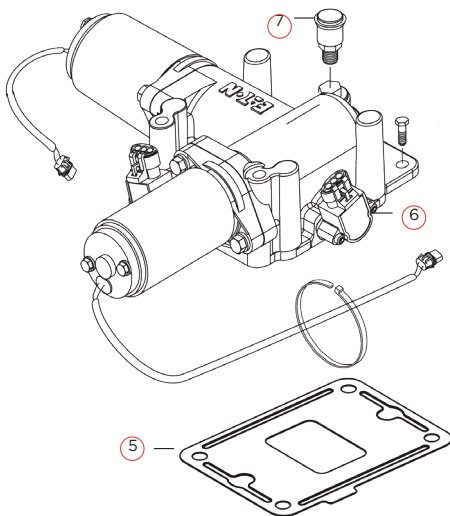
AS2 ECU & Harness



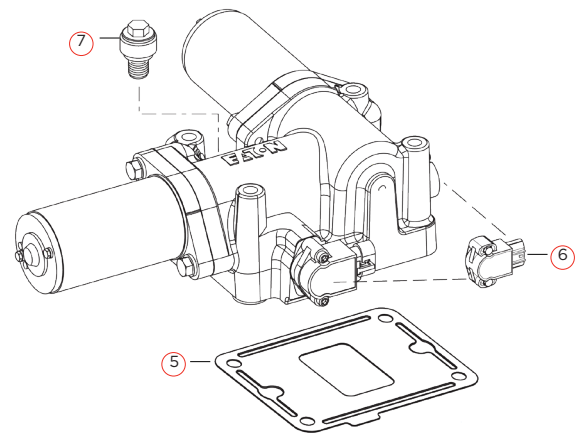
S3 ECU Harness



K3436 XY Shifter AS2



K3784RX AS3 Shifter

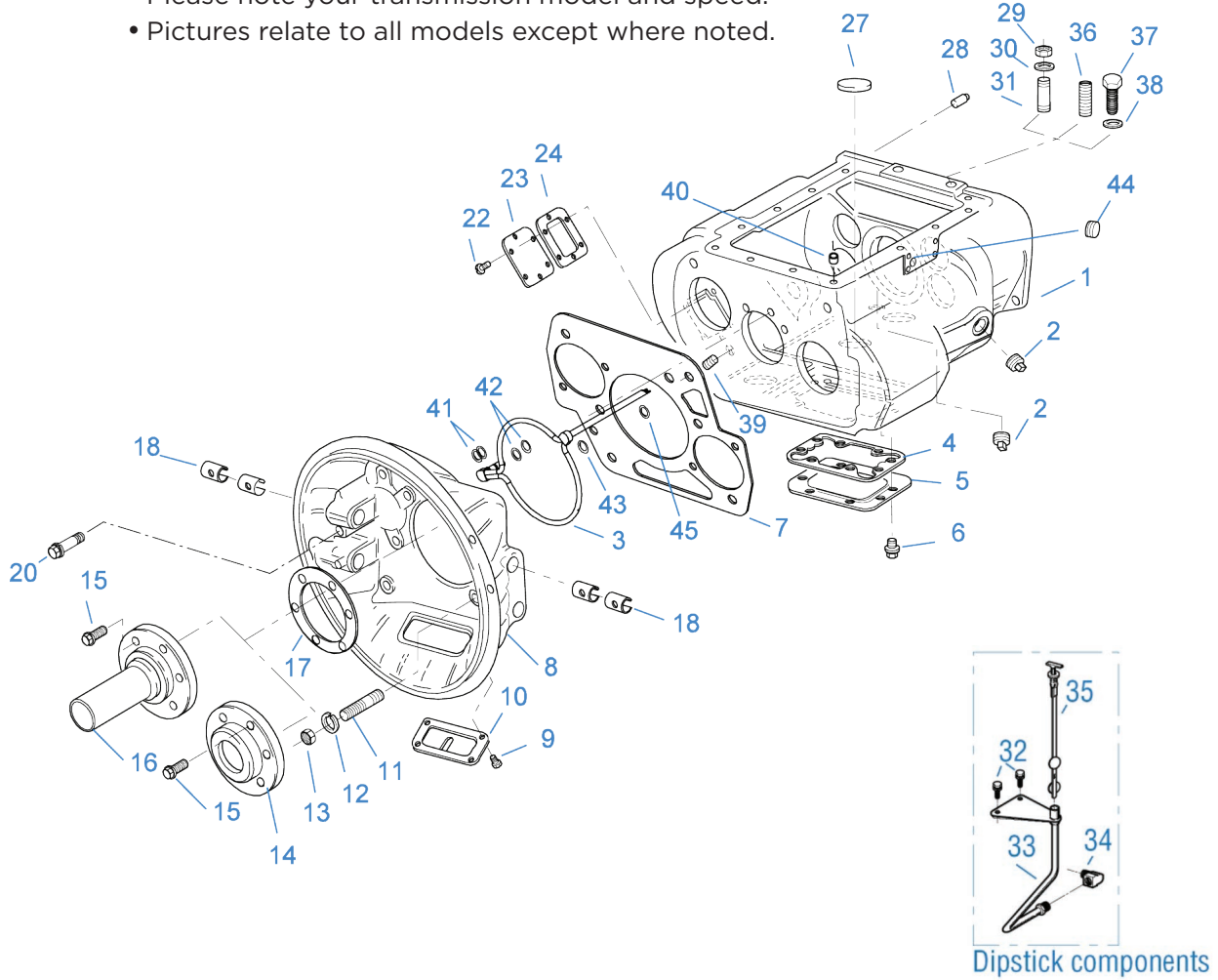


Item No.	Part No.	Description
1	K4118	Harness Kit AS2
2	K3457RX	Reman ECU AS2
3	K3681	Harness Kit AS3
4	K3736RX	Reman ECU AS3

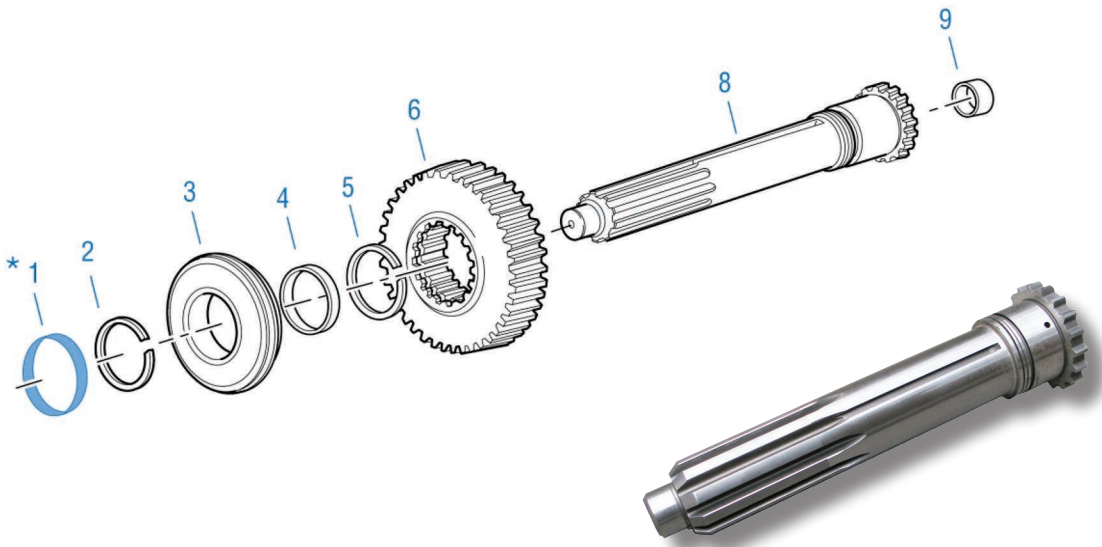
Item No.	Part No.	Description
5	4305452	Gasket
6	K3438	Position Sensor
7	4304602	Breather

CASE INPUT SHAFT

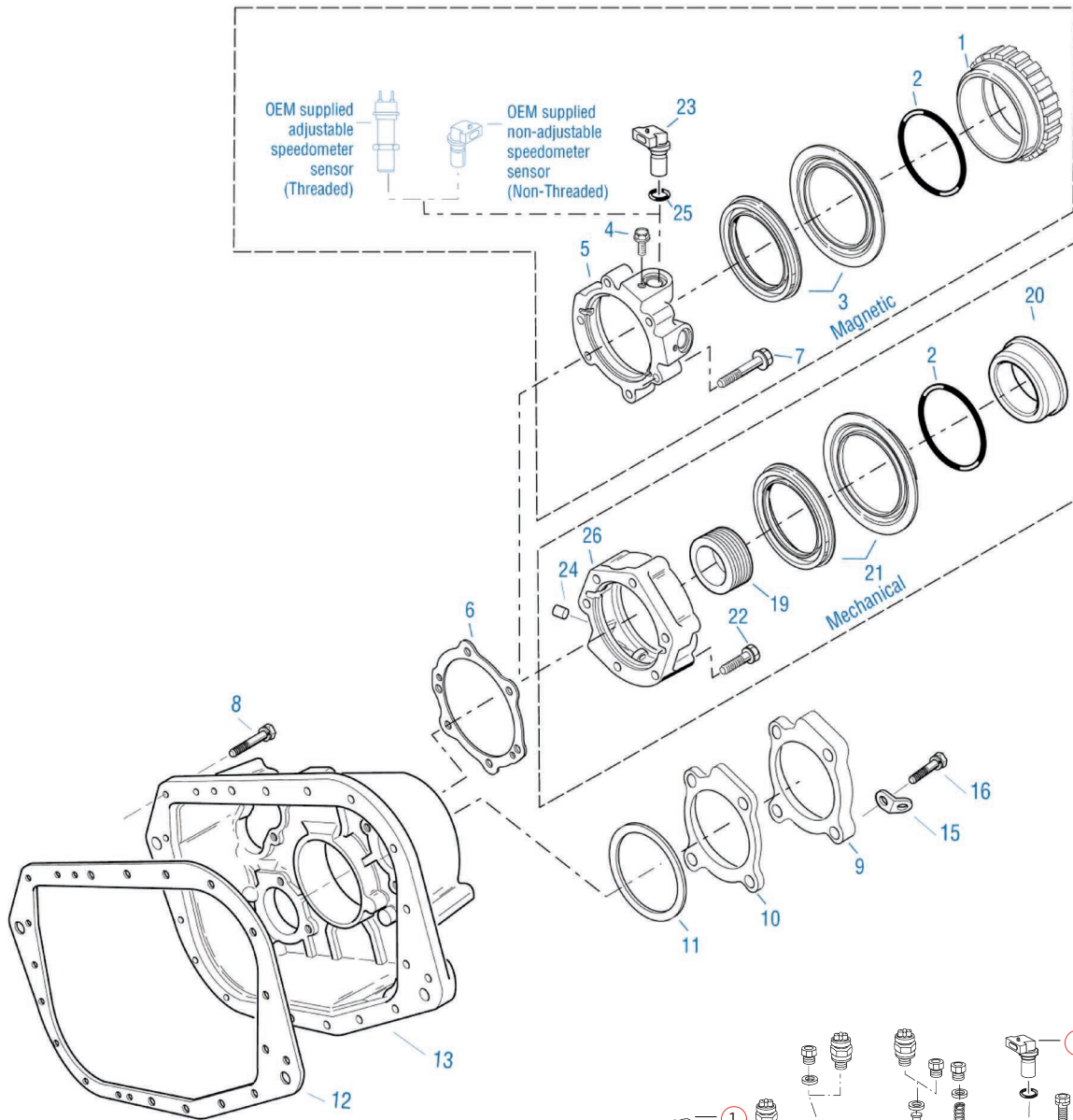
- Use the following pages to email or fax your orders or enquiries. Please note your transmission model and speed.
- Pictures relate to all models except where noted.



INPUT SHAFT & DRIVE GEAR



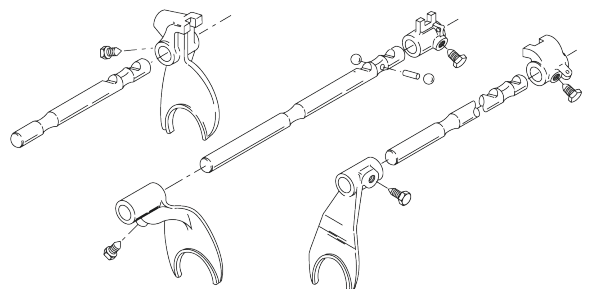
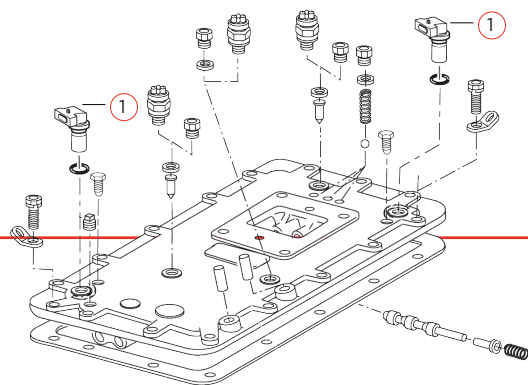
AUXILIARY CASE ASSEMBLY



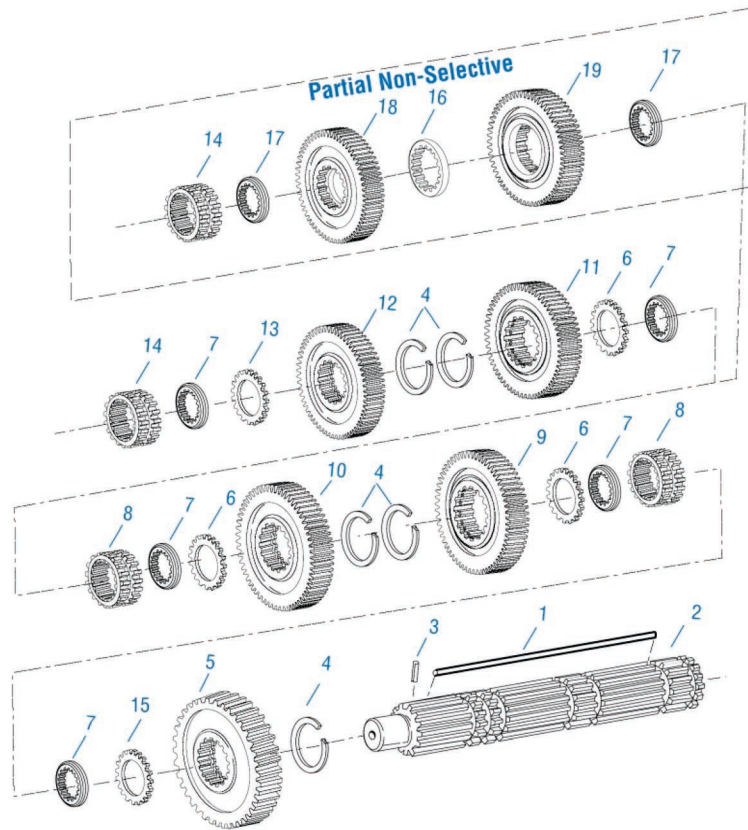
Shift Bar Housing

① **Speed Sensor**
K3231

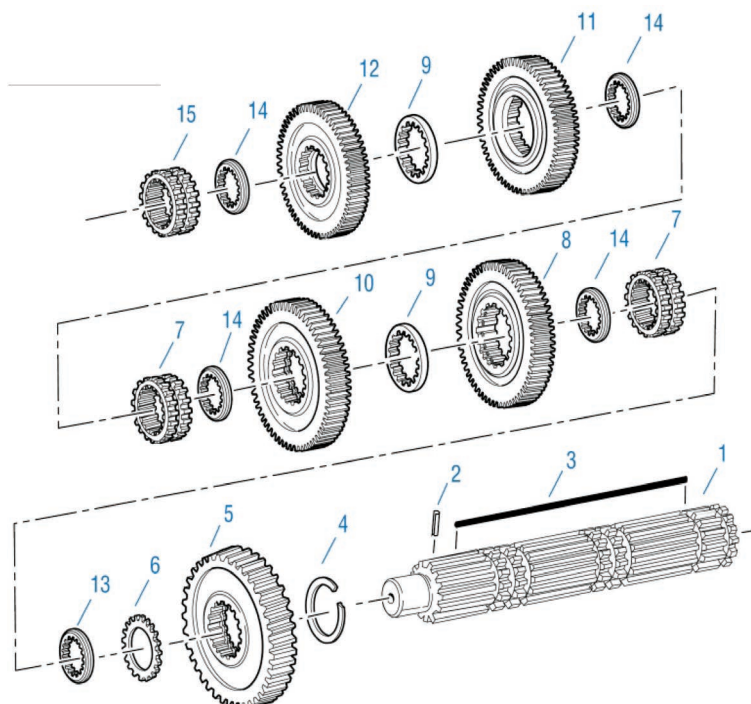
Speed Sensor Kit
K4185



MAINSHAFT ASSY - 13/18 SPEED



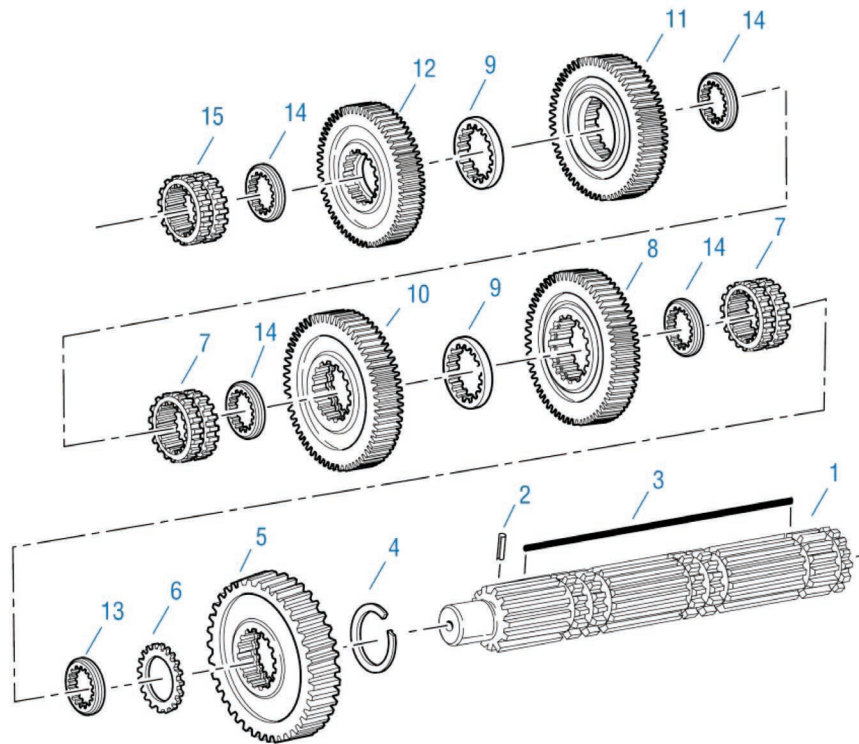
NON-SELECTIVE MAINSHAFT - 13 SPEED



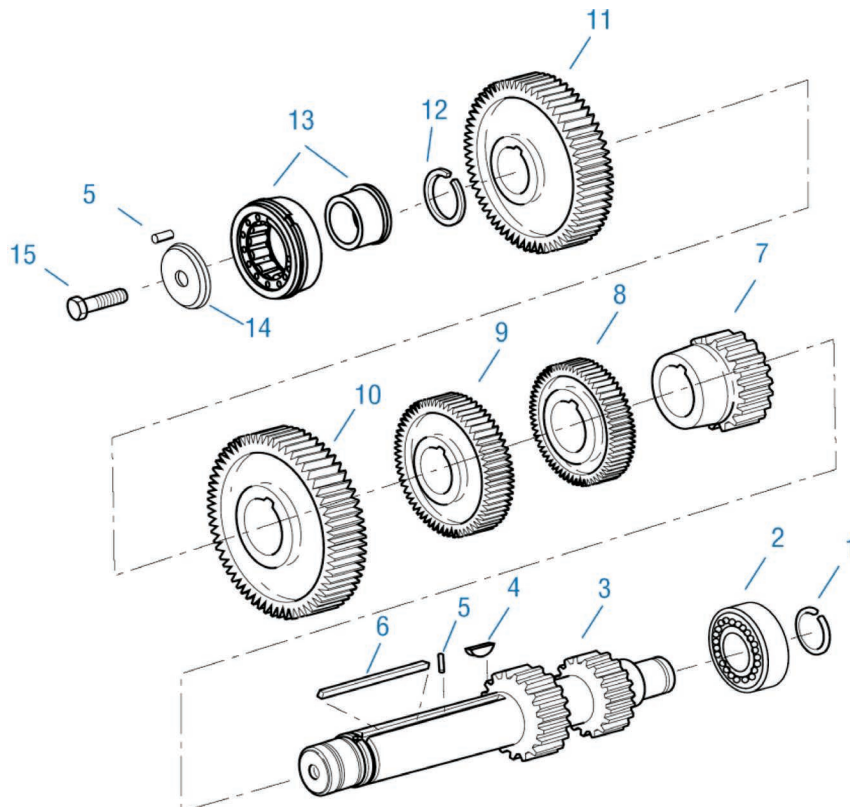
TRT MADE POSSIBLE

EATON TRANSMISSION

MAINSHAFT ASSY - 15 SPEED



COUNTERSHAFT ASSY - ALL SPEEDS

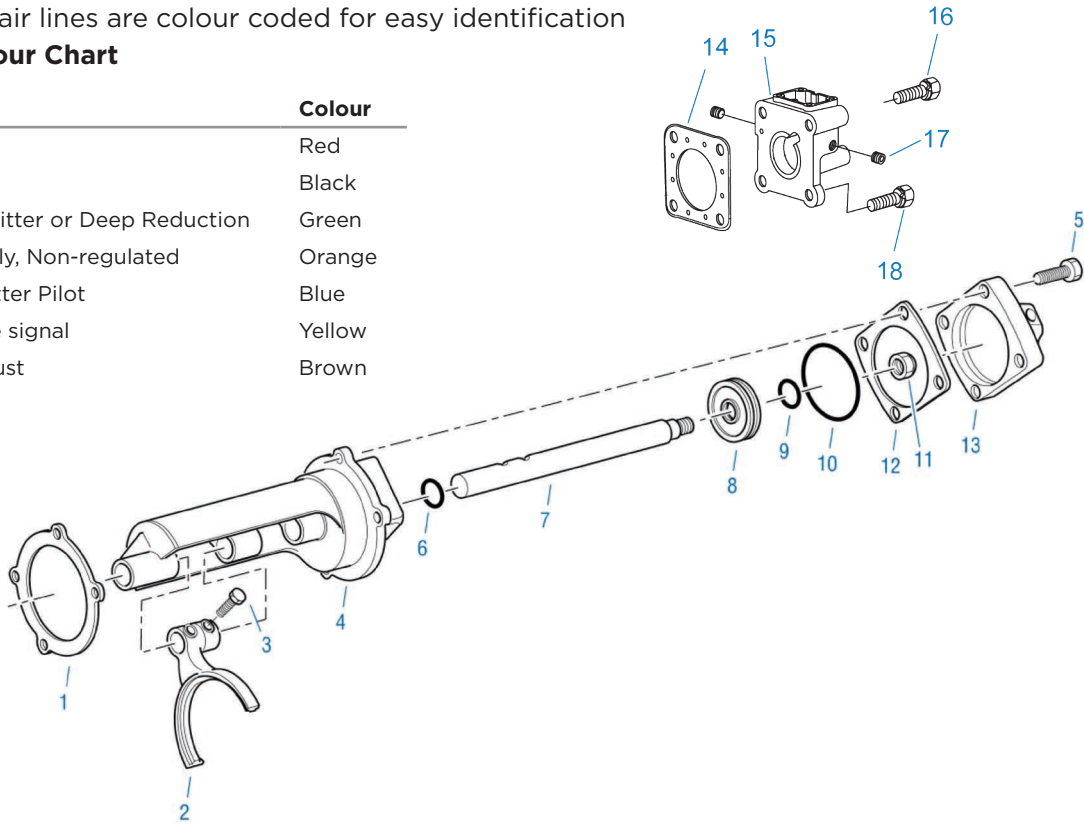


RANGE CYLINDER - 13/18 SPEED

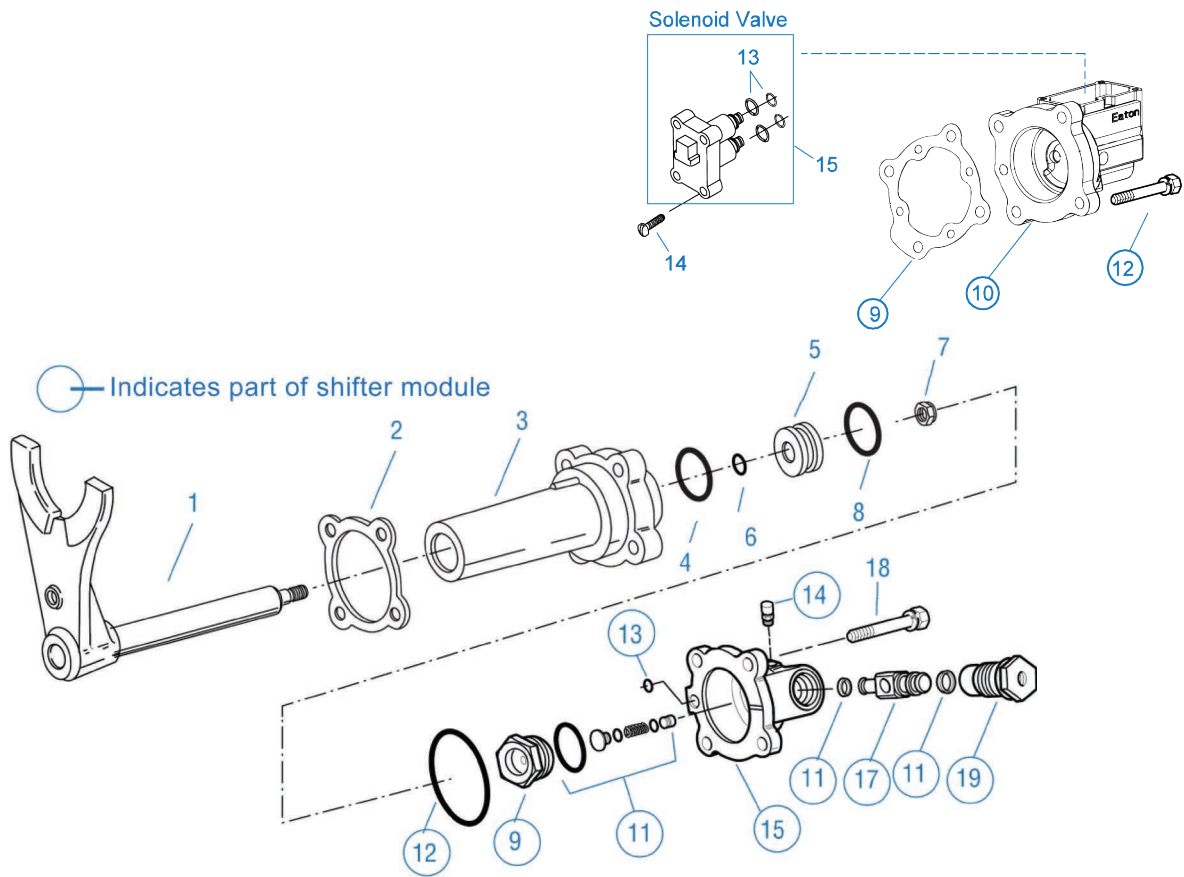
Eaton 5/32" air lines are colour coded for easy identification

Air Line Colour Chart

Tube	Colour
S-Supply	Red
P-Pilot	Black
H/L - Splitter or Deep Reduction	Green
A - Supply, Non-regulated	Orange
SP - Splitter Pilot	Blue
B - Brake signal	Yellow
E - Exhaust	Brown



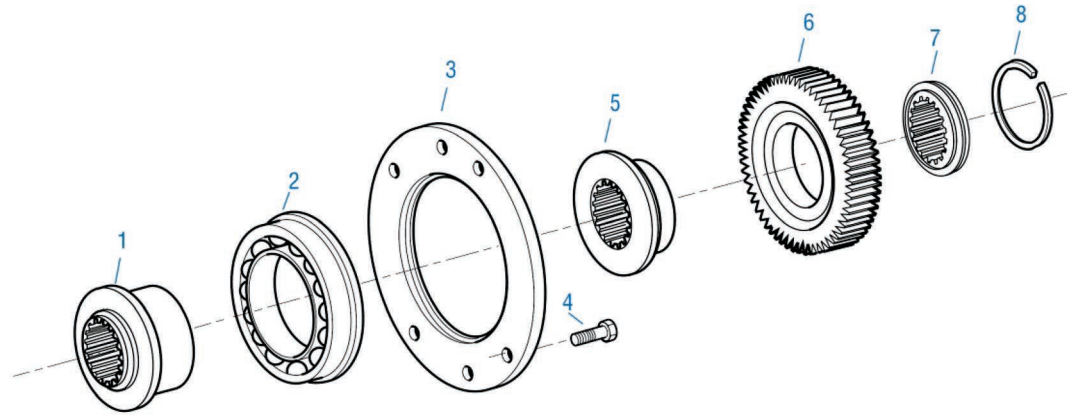
SPLITTER CYLINDER - 13/18 SPEED



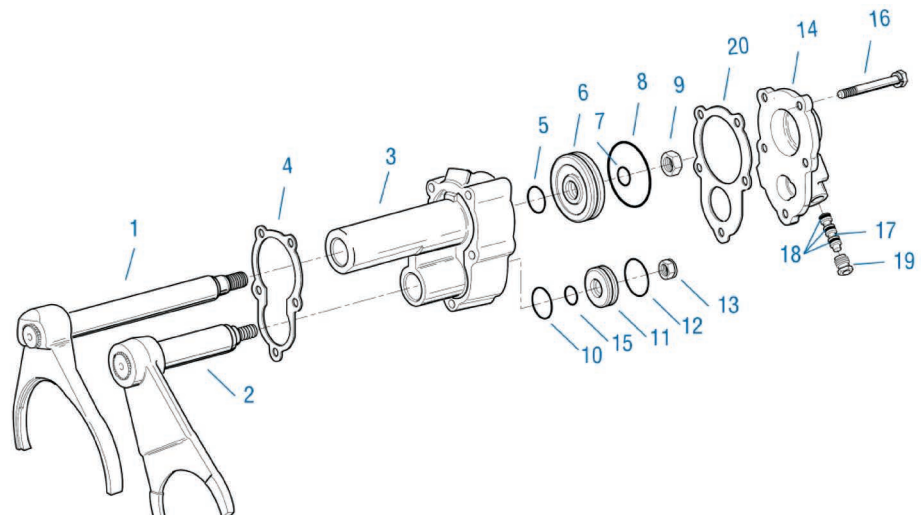
TRT MADE POSSIBLE

EATON TRANSMISSION

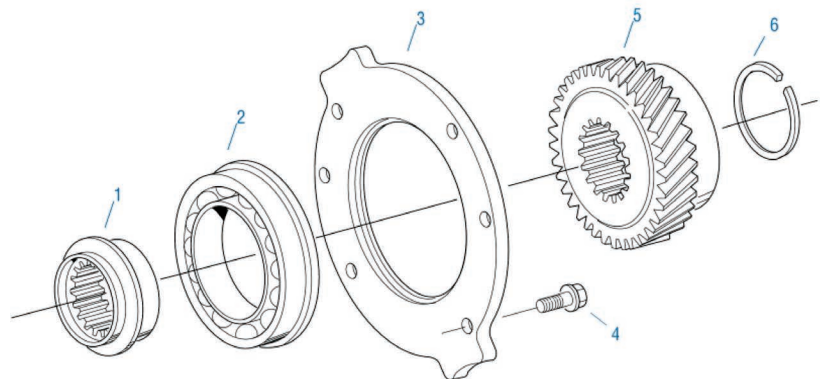
AUXILIARY DRIVE GEAR - 13/18 SPEED



RANGE CYLINDER - 15 SPEED



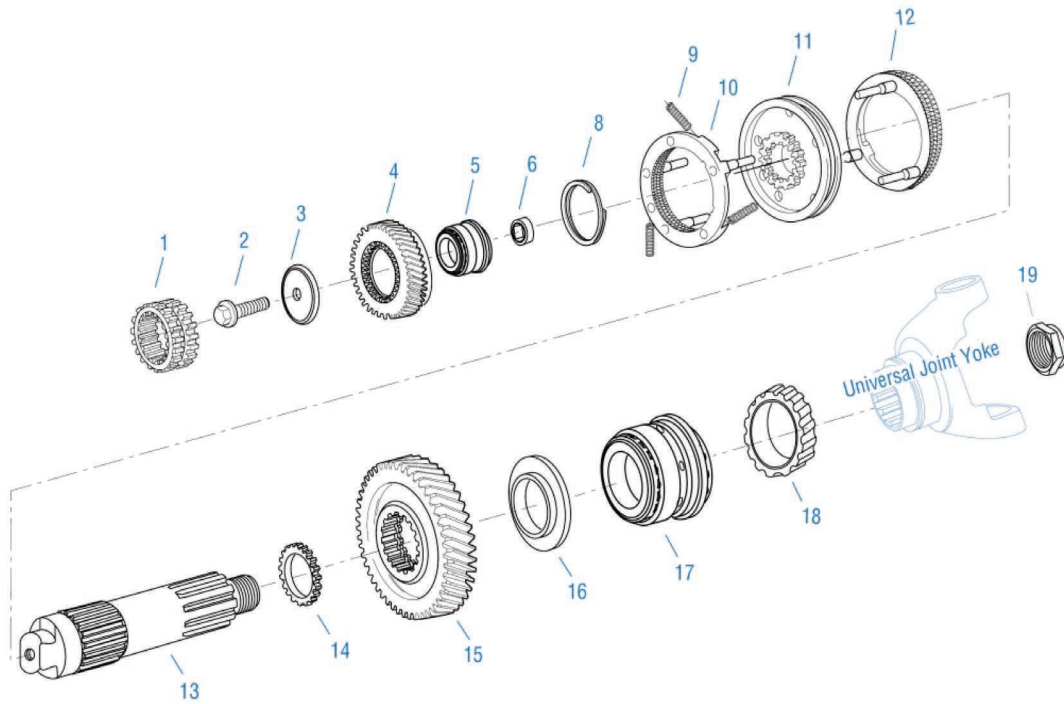
AUXILIARY DRIVE GEAR



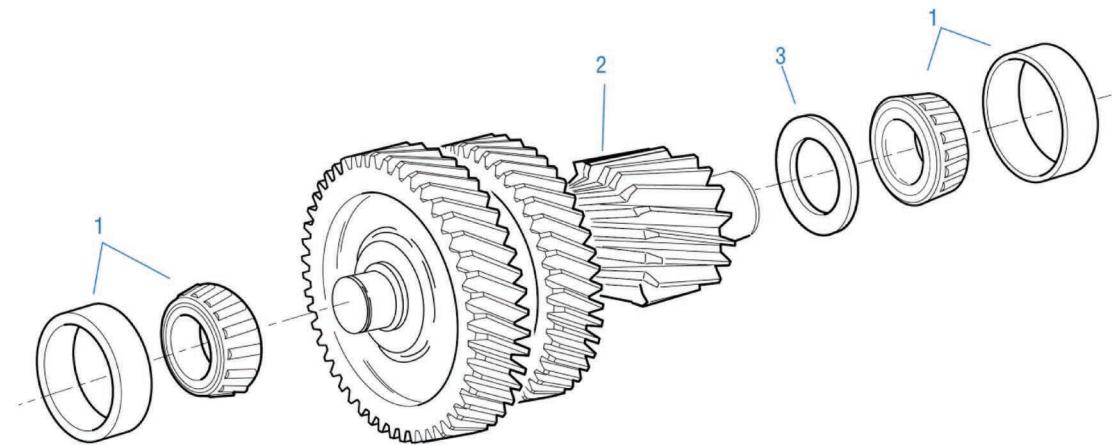
TRT MADE POSSIBLE

EATON TRANSMISSION

AUXILIARY MAINSHAFT - 13/18 SPEED



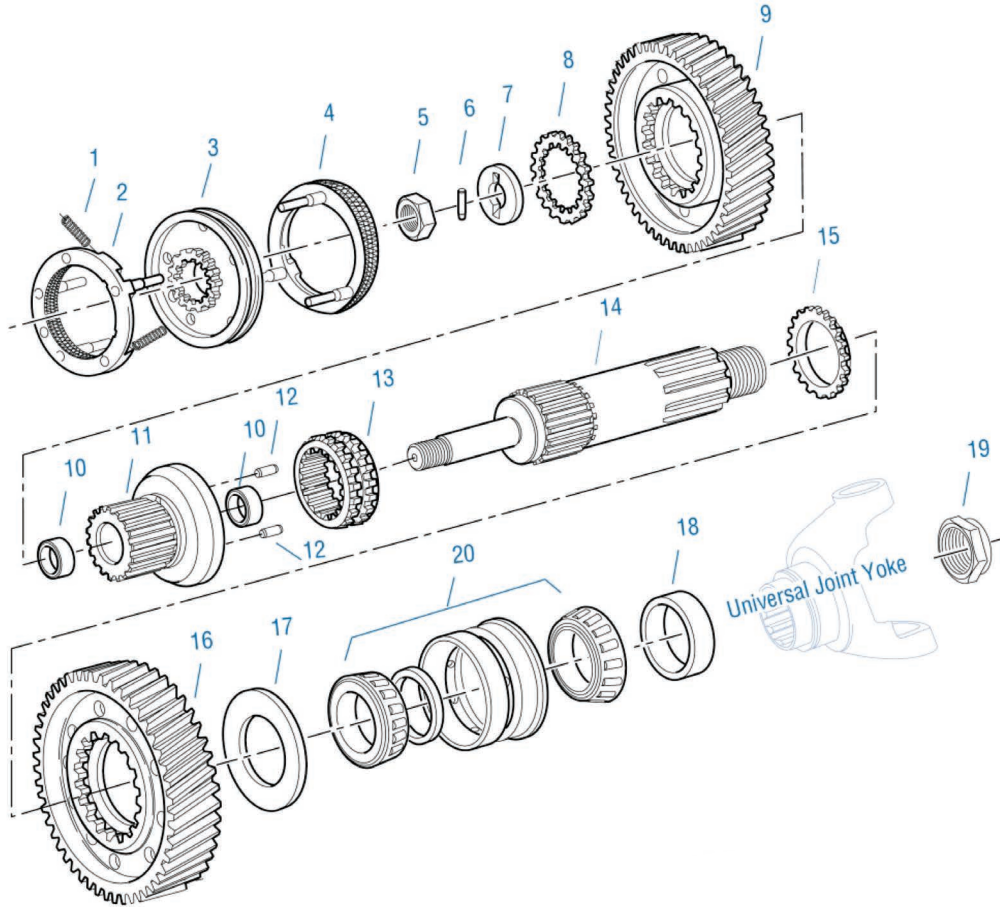
AUXILIARY COUNTERSHAFT - 13/18 SPEED



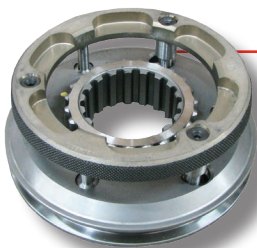
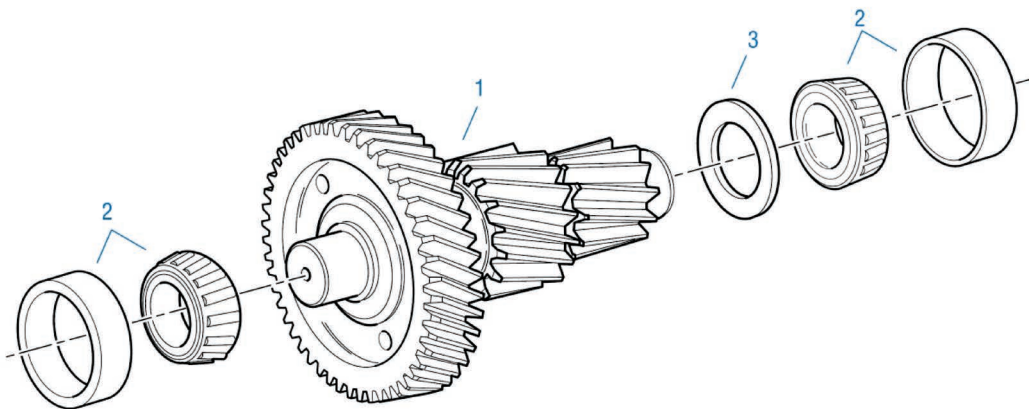
TRT MADE POSSIBLE

EATON TRANSMISSION

AUXILIARY MAINSHAFT - 15 SPEED



AUXILIARY COUNTERSHAFT - 15 SPEED



SYNCHROS

Kit Number	Transmission Series
K-3492	Synchro less hub
K-3493	Synchro with hub 915/9513
K-3494	Synchro with hub 613/318/15
K-3497	Synchro with hub 713/918