

TRT. MADE POSSIBLE FLEETGUARD RUBBER WARE

TEE BOLT & CONSTANT TORQUE CLAMPS



Standard Tee Bolt Clamp - Stainless Steel

Suits Rubber Ware ID	Part No.	Actual Clamp ID
76mm 3.0"	3316656S	3.25 - 3.56"
102mm 4.0"	3316658S	4.25 - 4.56"
127mm 5.0"	3316660S	5.25 - 5.56"
140mm 5.5"	3316661S	5.75 - 6.06"
152mm 6.0"	3316662S	6.38 - 6.69"
178mm 7.0"	3316663S	7.25 - 7.76"

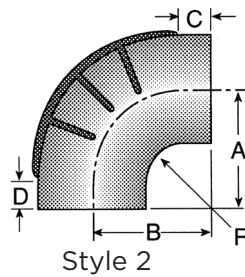
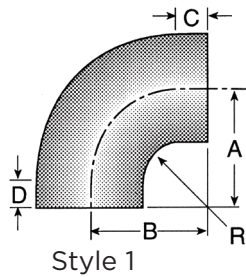
Constant Torque - Spring Loaded

Clamp ID	Part No.
3.13-3.37" 3.0"	90588K
4.13-4.37" 4.0"	90600K
5.13-5.37" 5.0"	TB800SL

RUBBER WARE 90° ELBOWS



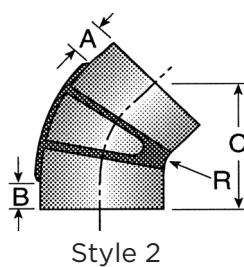
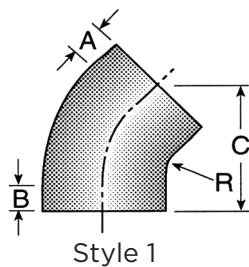
ID	Part No.	OD	A	B	C	D	R
76mm 3.0"	3316566S	89mm 3.5"	5.25"	5.25"	1.75"	1.5"	2"
102mm 4.0"	3316568S	114mm 4.5"	5.75"	5.75"	1.75"	1.5"	2"
127mm 5.0"	3316570S	140mm 5.5"	6.12"	6.12"	1.75"	1.62"	1.75"
140mm 5.5"	3316571S	152mm 6"	6.5"	6.5"	1.75"	1.75"	1.75"
140mm 5.5"	89829K	152mm 6"	8"	5.5"	4.5"	1.5"	1"
152mm 6.0"	3316573S	165mm 6.5"	7"	7"	2.25"	2"	1.75"
152mm 6.0"	89830K	165mm 6.5"	5"	5"	1.5"	1.5"	1"
152mm 6.0"	89826K	165mm 6.5"	7"	9"	4.25"	2"	1.75"
178mm 7.0"	3316576S	194mm 7.62"	7.56"	7.56"	2.25"	2"	1.75"



RUBBER WARE 45° ELBOWS



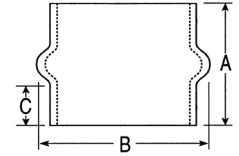
ID	Part No.	OD	A	B	C	R
76mm 3.0"	3316579S	89mm 3.5"	1.5"	1.5"	5.5"	2"
102mm 4.0"	3316581S	114mm 4.5"	1.5"	1.5"	5.5"	2"
127mm 5.0"	3316583S	140mm 5.5"	1.62"	1.62"	5.25"	1.75"
140mm 5.5"	3316584S	152mm 6"	1.75"	1.75"	6.25"	1.75"
152mm 6.0"	3316585S	165mm 6.5"	2"	2"	6.5"	1.75"
178mm 7.0"	3316586S	194mm 7.62"	2.25"	2.25"	8"	1.75"



HUMP HOSE



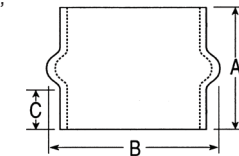
ID	Part No.	A	B	C
76mm 3.0"	3316606S	5.25"	4.5"	2"
102mm 4.0"	3316608S	5.25"	5.37"	2"
127mm 5.0"	3316610S	6"	6.12"	2.25"
140mm 5.5"	3316611S	6"	7"	2.25"
152mm 6.0"	3316612S	7"	7.5"	2.75"
178mm 7.0"	3316613S	7"	8.5"	2.5"



HUMP HOSE REDUCER



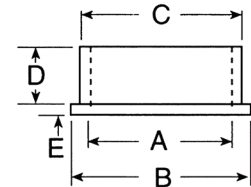
ID x ID	Part No.	A	B	C	D
127mm x 102mm 5.00 x 4.00"	3316618S	5.5"	6.5"	1.5"	1.75"
140mm x 102mm 5.50 x 4.00"	3316619S	6"	7"	1.87"	2"
140mm x 127mm 5.50 x 5.00"	3316620S	6"	7"	1.87"	2"
152mm x 127mm 6.00 x 5.00"	3316621S	6"	7.5"	1.87"	2"
152mm x 140mm 6.00 x 5.50"	3316622S	6"	7.5"	2"	2"
178mm x 140mm 7.00 x 5.50"	3316623S	7"	8.5"	2.25"	2.75"



REDUCING INSERT SLEEVE



A	B	Part No.	C	D	E
4.50	5.50	3950450S	5.00	1.50	.25
4.00	5.50	3950400S	5.00	1.50	.25
5.00	6.00	3316631S	5.50	1.50	.25
5.00	6.50	3316632S	6.00	1.50	.50
5.50	6.50	3316633S	6.00	1.50	.25



REDUCING 90° ELBOW



A (ID)	B (ID)	Part No.	C	D	E	F	R
102mm 4.0"	127mm 5"	89898K	6.25"	6"	1.5"	1.7"	1.5"
127mm 5.0"	152mm 6"	3316589S	7"	6"	1.5"	1.7"	1.5"
140mm 5.5"	152mm 6"	3316590S	6.75"	6.75"	1.75"	1.75"	1.75"
152mm 6.0"	178mm 7"	3316593S	9"	7.56"	3"	3"	0.5"

