

WALKING BEAM

Hendrickson's RT and RTE series have been the Industry standard mechanical suspension for around 70 years. Design enhancements to improve weight, comfort, and durability, have left the basic format unchanged. Two beams connected to each Drive axle pivot on a central shaft, which is mounted by a



2 32277
Pin Shackle 380 + 400
1³/₈" OD
7-⁵/₁₆" Length



7 30057-008
Bush Spring Eye 380
1³/₈" ID
1⁵/₈" OD
3¹⁵/₁₆" Length



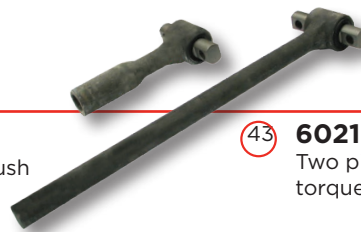
30 49600
Centre Bush 380 + 400
3-¹/₂" Small OD
3-³/₄" Large OD
12" Length OD



40 34013-073
Adaptor & Bush Kit
400 contains 45900
End Bush
21140-034 Adaptor



42 45900
Beam End Bush
380 + 400
4-³/₈" OD
2-¹/₂" ID
5-³/₄" Length



43 60218-000
Two piece transverse
torque rod kit

○ Relate to chart numbers on following page

TORQUE RODS & BUSHES



44694
Torque Rod Bush Straddle
2-¹⁷/₃₂" OD
4-³/₈" Bolt Centre
⁵/₈" Bolt Hole



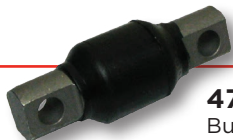
44695
Torque Rod Bush Straddle
2-³/₄" OD
4-³/₈" Bolt Centre
⁵/₈" Bolt Hole



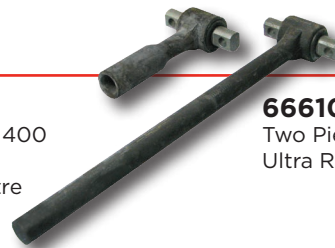
44697
Torque Rod Bush Taper
2-³/₄" OD
1-¹/₄" 12TPI Thread
3" Taper Length



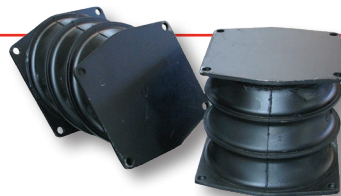
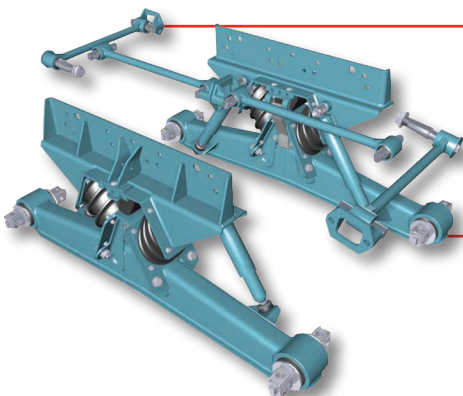
45477
Bush Torque Rod
3" OD
1-¹/₈" ID
3-¹/₄" Length



47691
Bush Ultra Rod 400
2-¹/₃₂" OD
4-³/₈" Bolt Centre
⁵/₈" Bolt Hole



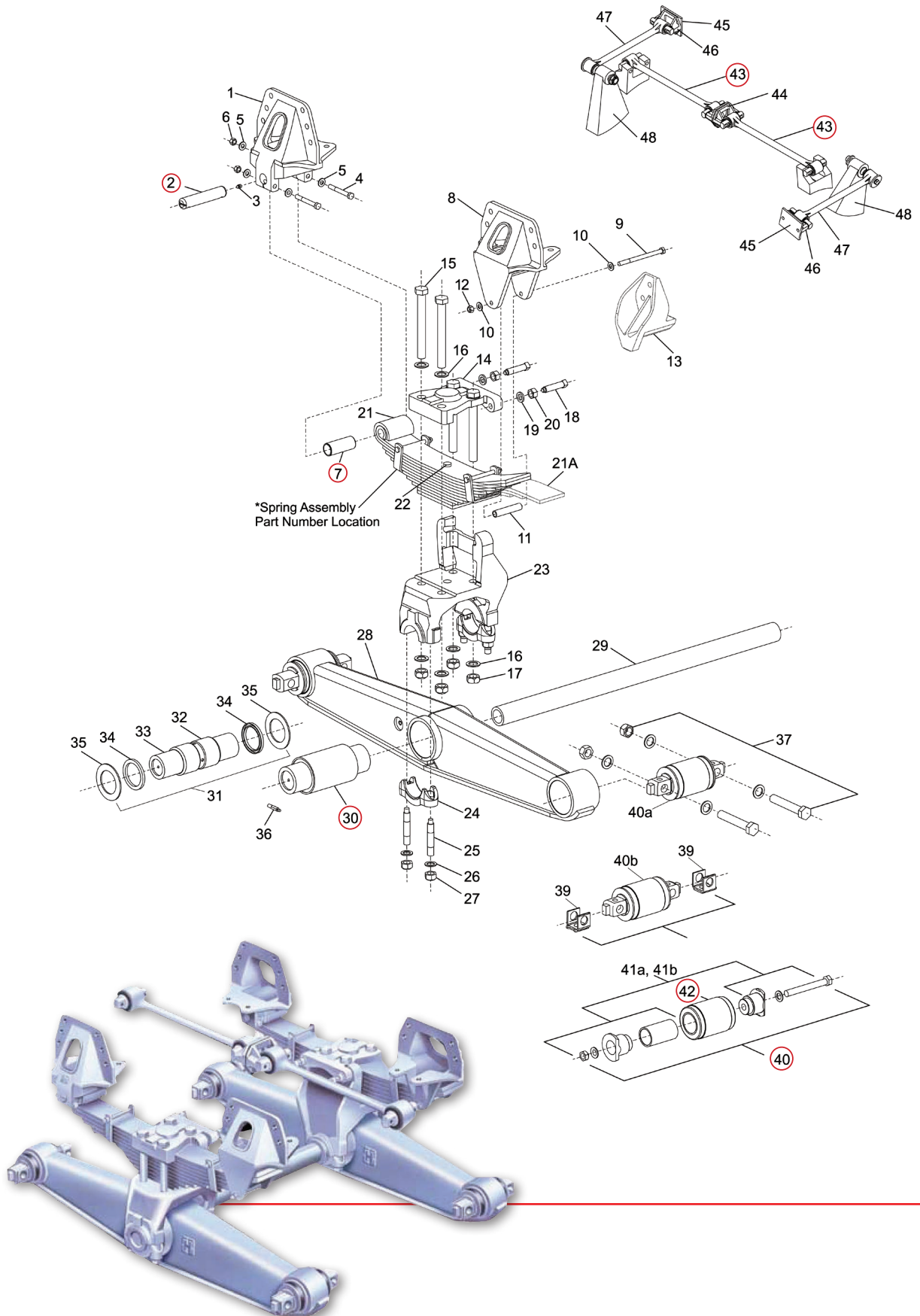
66610 + 66661
Two Piece End Straddle
Ultra Rod



60879-000
Spring Bolster Bush Set

multileaf springpack, and generally 2 torque arms. The HN series uses light weight, diagonally mounted rubber bolster springs to achieve superior articulation and ride. The narrow profile equalizing beam reduces weight.

RTE WALKING BEAM



HAS SERIES

Hendrickson HAS Air suspension.

Lightweight for Line-haul, rugged durability for on- and off-highway applications.

Heavy-duty shocks incorporate rebound spring which limits rapid shock extension during acceleration.

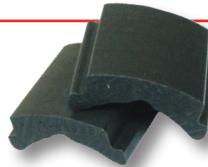
HAS 400, 402, 460: cross channels are formed from stamped steel.

HAS 40LH: extruded aluminium alloy cross channels reduce weight while maintaining strength.

Large volume air springs with rolling lobe design constantly adjust to changing road conditions to deliver superior ride quality.



① **58425-001**
Hanger Bracket
HAS Late
Type C + D



⑦ **56929-000**
Slipper Pad
HAS

②-⑥ **49175-014**
Rebound Roller Kit Axle Set



⑪ **47691-000L**
Bushing Torque Rod Suits
48411-006 HAS400
62007365 HAS460

⑱ **47417-001**
U-Bolt 7/8" UNF x 16-1/4"

47417-007
U-Bolt 7/8" UNF x 15"

47417-008
U-Bolt 7/8" UNF x 15-1/2"



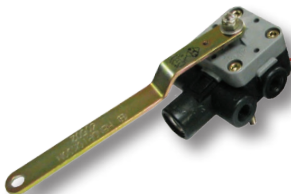
⑳ **56943-000**
Z Spring Support Member
1 7/8" HAS400

56946-000
Z Spring Support Member
2 HAS460



㉑ **58849-002L**
Air Spring
HAS400/402/460

50898-002L
Air Spring
HAS 40LH



④⑧ **57977-000**
Height control valve c/w
dump



⑥① **60670-005L**
Shock Asborber
HAS 400 460 Std

60675-003L
Shock Asborber
HAS 400 460 Hi Torque



⑥⑥ **60218-000**
Two piece transverse
torque rod kit

○ Relate to chart numbers on following page

TRT MADE POSSIBLE

HENDRICKSON HAS

HAS SUSPENSION

